

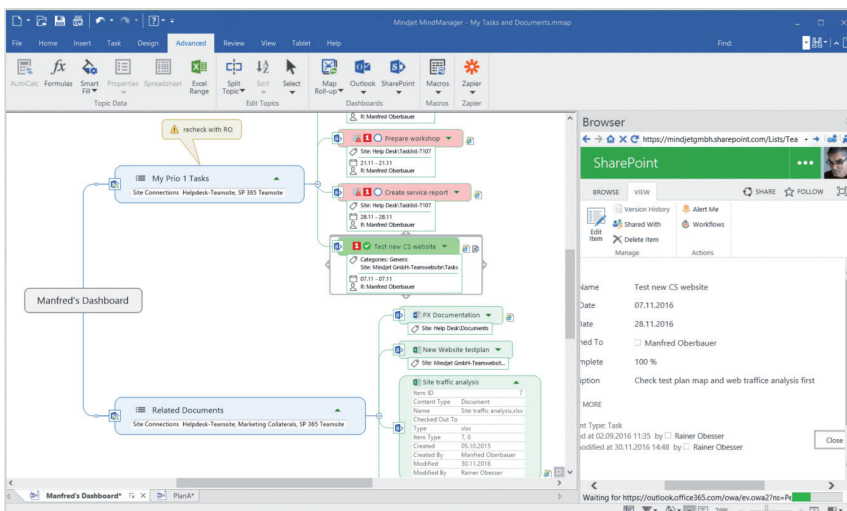
MindManager Enterprise – Collaboration with Microsoft SharePoint

MindManager Enterprise enhances team productivity with a deep integration with Microsoft SharePoint. With MindManager Enterprise, your team will be able to:

- Organize SharePoint content within MindManager's interactive diagrams using MindManager's SharePoint dashboard feature to query Tasks, Documents, Issues, Custom Lists, Calendar items and more
- Plan projects and schedules, synchronizing Tasks and Resources between MindManager and one or more SharePoint sites
- Connect with SharePoint sites to store and update MindManager files using MindManager 2017 for Windows
- Share MindManager files with any SharePoint user with the MindManager Server App for SharePoint which enables an interactive read-only experience via the browser

Build Interactive SharePoint Dashboards

Using the Enterprise capabilities within MindManager 2017 for Windows, users can build annotated maps that link to and organize SharePoint content. Users can find information quickly across one or more SharePoint sites and work with SharePoint information in context, seeing the big picture and all the details.



Users can retrieve content (list items) from the following SharePoint lists by adding dynamic queries to their MindManager maps:

- Tasks
- Documents
- Issues
- Images
- Calendars
- Links
- Announcements
- Custom Lists

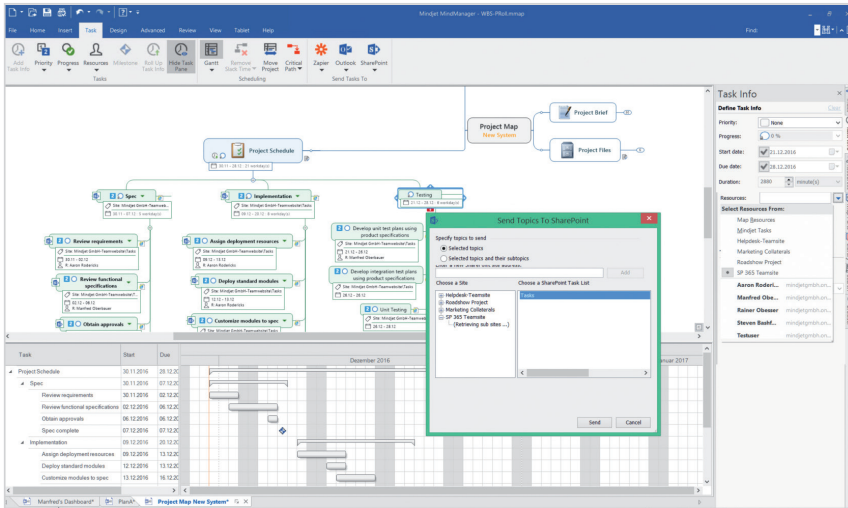
Using MindManager's dashboard features, users can track and manage tasks and items across multiple SharePoints in a single MindManager view. View multiple projects in a single MindManager map, or all tasks assigned to a resource from one or more Projects and SharePoint sites.

Share MindManager Files with Any SharePoint User

MindManager users can save their files in SharePoint and the SharePoint user can open the map in an interactive read-only mode directly in their browser with the MindManager Server App for SharePoint. This App allows users to search for information, open and close branches, zoom in and out as well as pan the MindManager files to review content created by MindManager users.

Build and Synchronize Project Plans from MindManager

Project managers can develop plans within MindManager 2017 for Windows, assigning tasks to SharePoint resources and send the project task lists to SharePoint. Team members can update status in SharePoint and the results are synchronized with your MindManager plan.

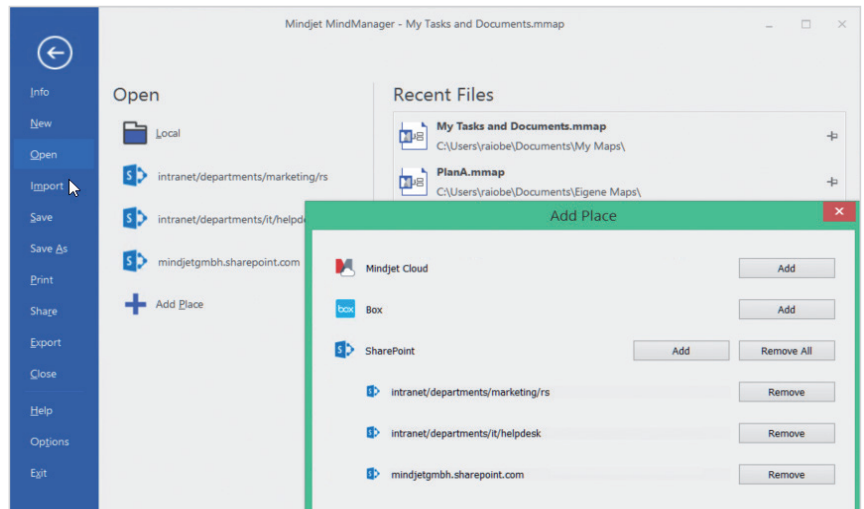


Project managers and planners can build plans and synchronize the following task information:

- Task Title
- Priority
- Progress
- Start Date
- Due Date
- Resources
- Category

Store and Access Files within SharePoint

MindManager 2017 for Windows lets team members save MindManager files within SharePoint, open files from SharePoint document repositories, check files out, and check files back in.



Technical Requirements

For MindManager 2017 for Windows

- Supported SharePoint Authentication Methods: NTLM, Forms Based, SAML for SharePoint 2010, 2013 or 2016, Azure ADFS/On Premises, Office 365, and Multi-Factor Authentication

For MindManager Server App for SharePoint:

- SharePoint 2013 and 2016 [Foundation, Server, Office 365]
- Browser for SharePoint 2013 and 2016: Internet Explorer 11 and above, Firefox 17 and above, and latest public releases of Chrome and Safari.

Mindjet, MindManager and the Mindjet logo are trademarks of Corel Corporation, registered in the United States and other countries. Windows and the Windows logo are registered trademarks of Microsoft Corporation, in the United States and other countries. Mac and the Apple logo are trademarks of Apple Inc., registered in the United States and other countries. Other names may be trademarks of their respective owner.